

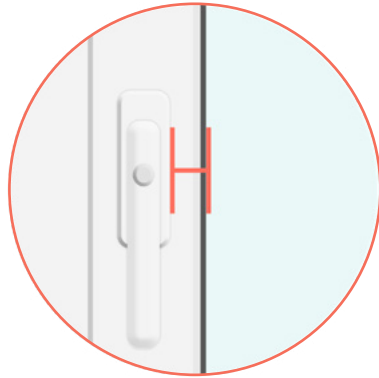
### You will require:

- A metal tape measure
- A bank card or similar
- A pencil and paper

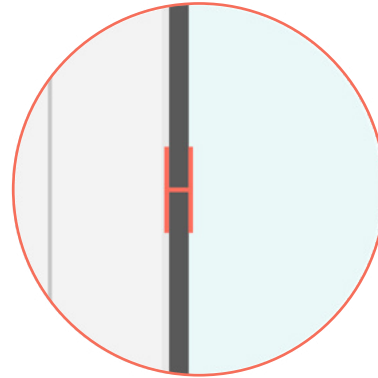
As with any measuring, it's key to take your time and check twice. With our simple guide you'll be a measuring whizz in no time.

Perfect Fit blinds are very easy to measure, but the methods used are completely different to regular blind measuring.

### Pre-flight checks:



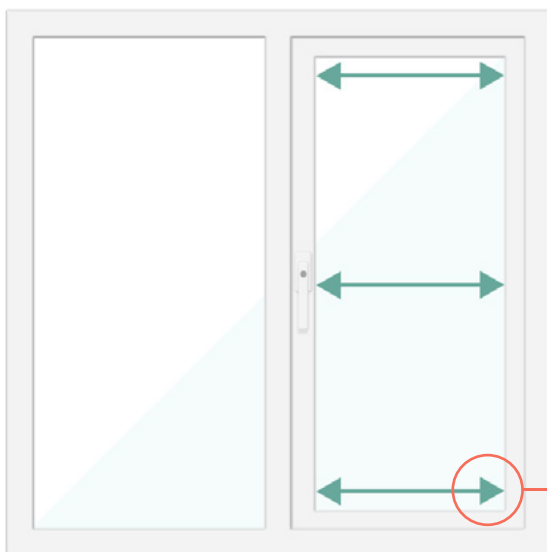
The edge of any handles or ventilation units must be more than 25mm away from the edge of the glass.



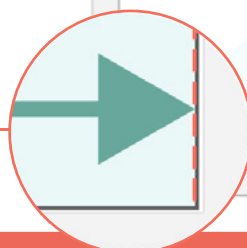
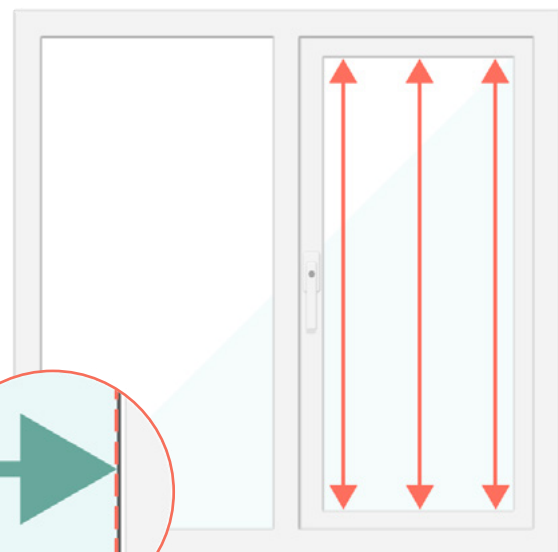
The width of the seal/beading must not exceed 6mm.

Perfect Fit blinds are designed for windows and doors that have a rubber seal/beading, this is the beading sits between the frame and the glass. Make sure your windows or doors have this before proceeding.

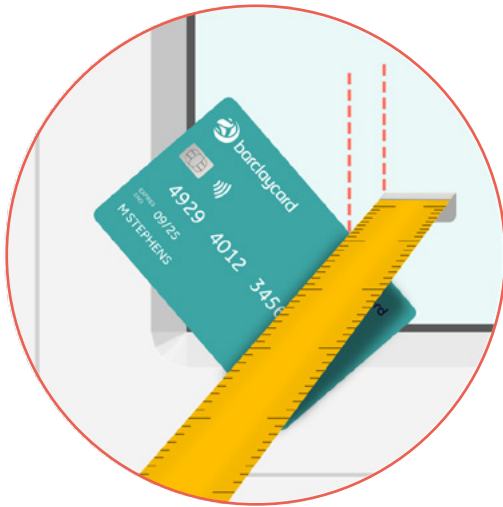
Measure the width in 3 locations and use the lowest number.



Measure the drop in 3 locations and use the lowest number.



Only measure the visible glass, do not include any beading or seals. Measure from inside the frame where the glass meets the seal/beading. Measure every window and door, don't assume that they are the same sizes.



Using a bank card or something similar, place it flat on the frame corner. Using your tape, measure the depth between the glass and the card. This will give you your bracket size.

### Bracket sizes available

Standard Perfect Fit (Venetian & Pleated)  
18mm, 20mm, 22mm, 24mm, 26mm,  
28mm, 30mm & 32mm

Perfect Fit Shutter Lite **ONLY**  
20mm, 22mm & 24mm

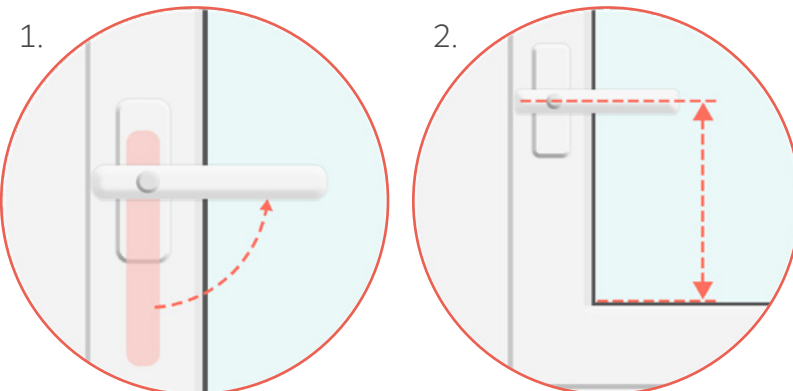
If your measurement does not exactly match one of the above brackets, then round up to the closest bracket size.

The section below is only for Perfect Fit Shutter Lite, the following information is not required for standard Perfect Fit types (Venetian & Pleated).

If a window handle is present a handle rebate is required, so that the handle can move with the shutter in place. If multiple panels are used, only the closest panel to the handle has the cutout. Select this under the option 'Window Handle Location'. Multiple panels are auto-assigned if the glass width is over 750mm.

Tilt bar locations will always be opposite a handle rebate, as they can't be on the same side for that single panel (if rebate handle is on the left, the tilt bar will be on the right and visa versa).

### For side window handles (left or right)

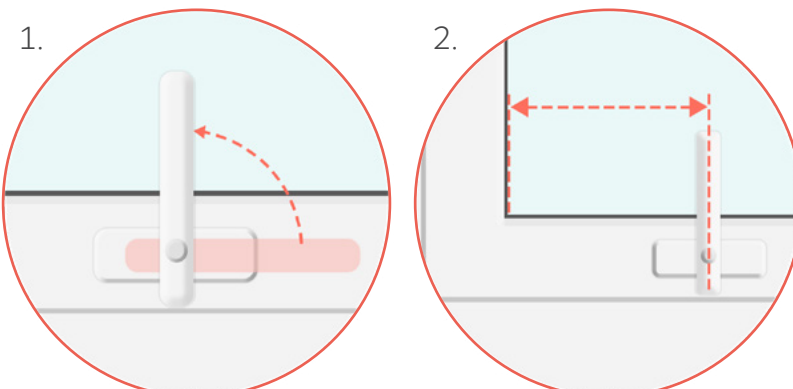


1. Move the handle to a horizontal position (if not already).
2. Measure from the bottom of the visible glass to the centre of the handle.

### TOP TIP

If you're measuring for a door, you should **NOT** require a handle rebate cutout.

### For bottom window handles



1. Move the handle to a vertical position.
2. Measure from the left of the visible glass to the centre of the handle.